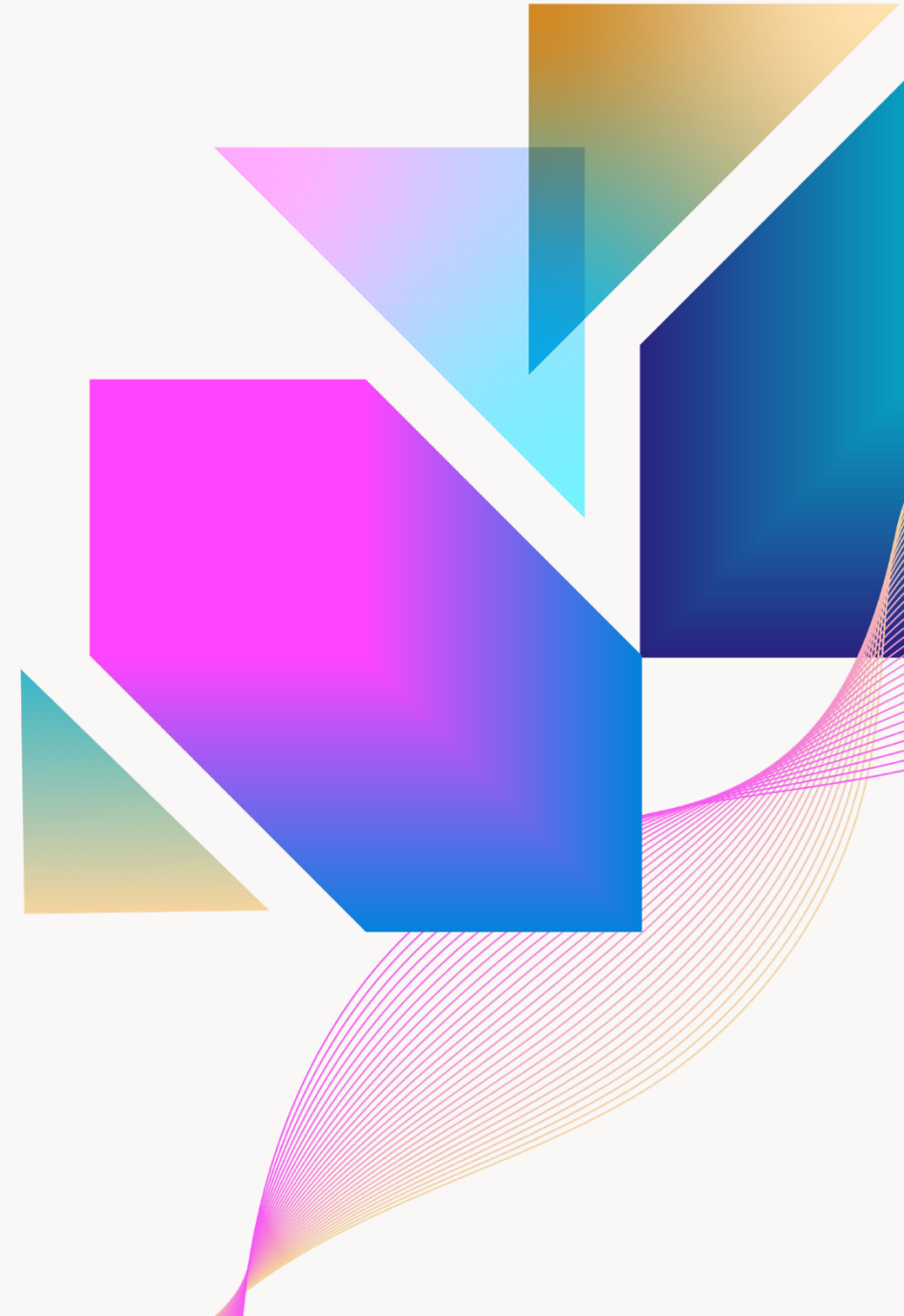




Standardize Your Bluebeam Deployment

Alex Arriaga
Design Technology Specialist – Bluebeam
Symetri US



Course Description

Creating standards in Bluebeam Revu is a must when working and collaborating with others, but it is also key when upgrading your Bluebeam Solutions from version to version. In this session we will show how to streamline your project team's work from the very beginning—starting with the deployment phase. We will walk through the necessary steps from uninstalling a previous version of Revu, all the way through completing your customized deployment scripts and accessing the next version of Revu for the first time. This session is perfect for project and IT admins looking to get tips and insights for a perfectly planned deployment of Bluebeam Revu.

Learning Objectives

- Creating a Custom Preference File
- Creating Standard Tools & Profile
- Utilizing the Uninstall Script
- Customizing Deployment Script
- Deploying Revu21 with Preferences

Agenda

- Introduction
- Run through creating the .xml preferences file
- Creating Standard Toolsets/Profile
- Uninstall script demonstration
- Demonstrate Creating the Revu script
- Deploy Revu 21 with Preferences
- Show result with preferences applied

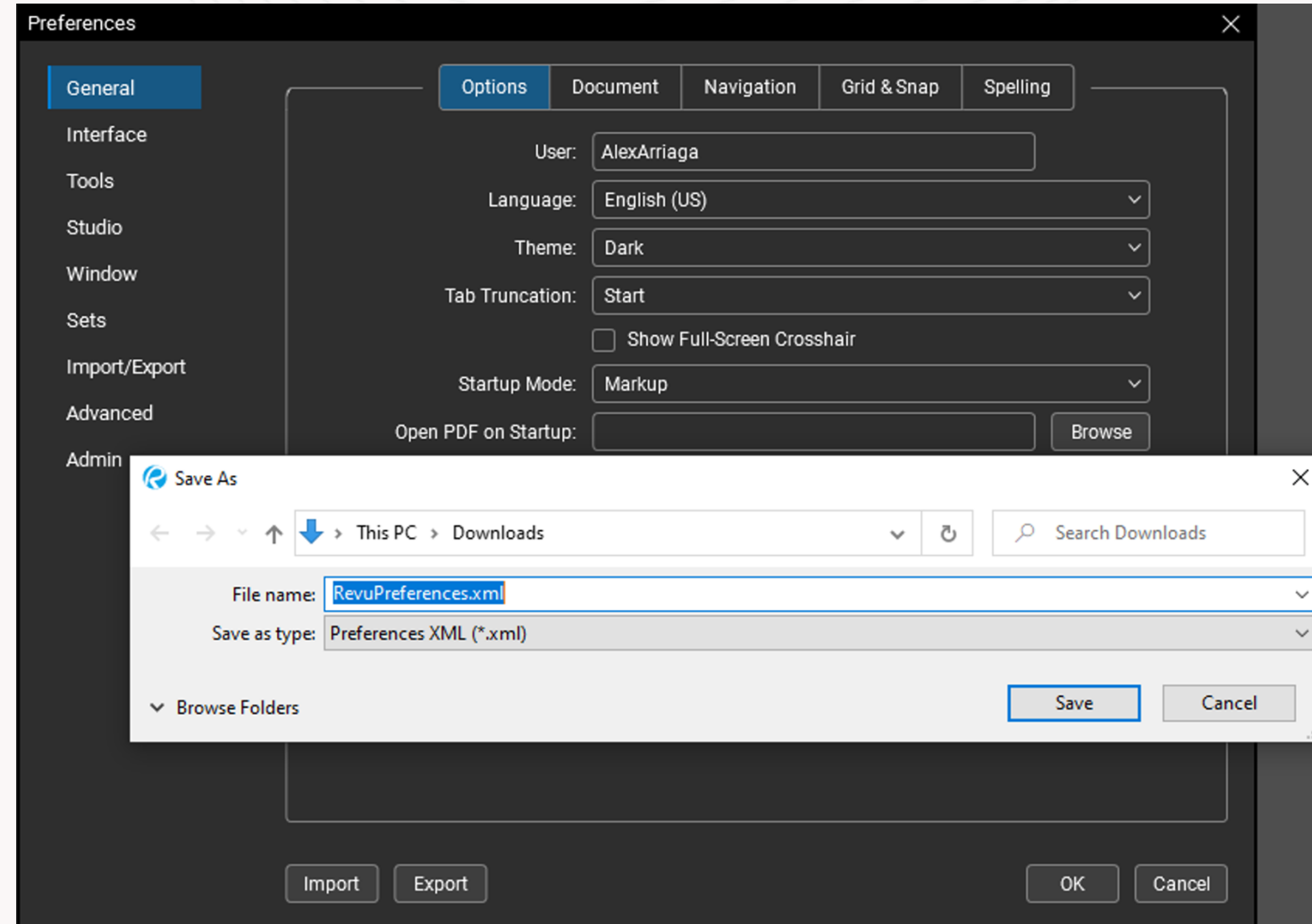
Alex Arriaga

- Denver , CO
- Bluebeam Certified Instructor
- Bluebeam Certified Support Technician
- Hobbies - Hiking, Bowling, Billiards, Fishing
- Five-year User



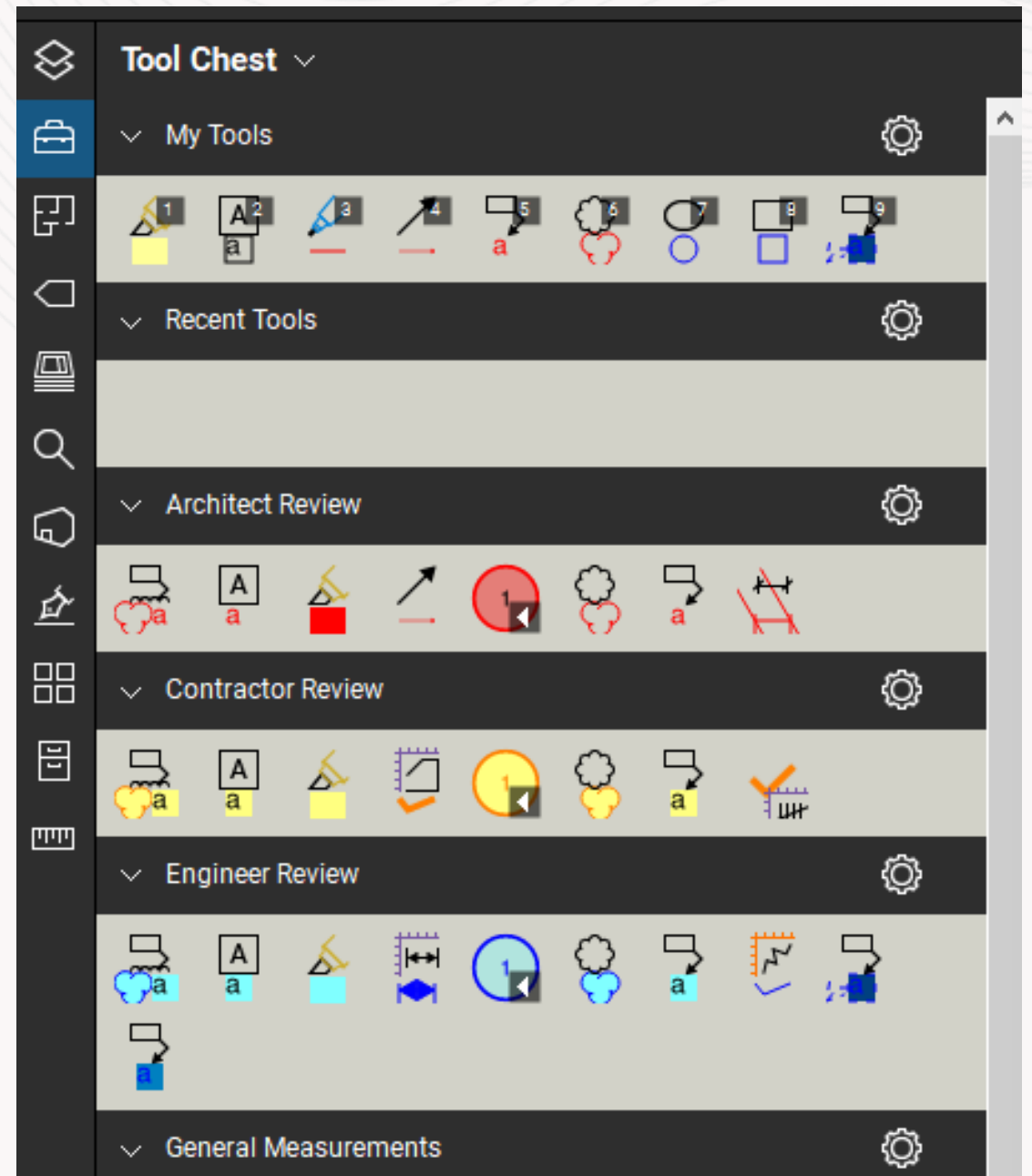
Exporting Preferences

Edit the Revu preferences to then export/import on any workstation



Standardize Your Profile and Toolsets

We can standardize the UI (user interface) and Toolsets to match our organization's needs



Uninstall Script

Automate your uninstallation process across multiple devices. File uninstalls all Revu components.

START "" "\\YOURCOMPANYSERVERLOCATION\Uninstall Previous Versions.bat"

```
SET UNINSTALLKEY64=HKLM\Software\Wow6432Node\Microsoft\Windows\CurrentVersion\Uninstall

REM =====
REM Bluebeam v21 Release 21.6.1
REM =====

REM Uninstall Bluebeam Revu 21.6.1 x64:
SET GUID={6FF2A905-75DD-476C-A68C-908367C4C862}
REG QUERY %UNINSTALLKEY%\%GUID%>nul 2>nul
IF "%ERRORLEVEL%"=="0" msixec.exe /x %GUID% /qn

REM =====
REM Bluebeam v21 Release 21.6.0
REM =====

REM Uninstall Bluebeam Revu 21.6.0 x64:
SET GUID={79C165CF-EC85-4E26-A547-8852CD92855D}
REG QUERY %UNINSTALLKEY%\%GUID%>nul 2>nul
IF "%ERRORLEVEL%"=="0" msixec.exe /x %GUID% /qn

REM =====
REM Bluebeam v21 Release 21.5.0
REM =====

REM Uninstall Bluebeam Revu 21.5.0 x64:
SET GUID={4654C225-1369-4FBA-B3A5-A4C03C19FF01}
REG QUERY %UNINSTALLKEY%\%GUID%>nul 2>nul
IF "%ERRORLEVEL%"=="0" msixec.exe /x %GUID% /qn

REM =====
REM Bluebeam v21 Release 21.4.0
REM =====

REM Uninstall Bluebeam Revu 21.4.0 x64:
SET GUID={143F713F-C3CD-482F-8630-7C3A21505973}
REG QUERY %UNINSTALLKEY%\%GUID%>nul 2>nul
IF "%ERRORLEVEL%"=="0" msixec.exe /x %GUID% /qn

REM =====
REM Bluebeam v21 Release 21.3.0
REM =====
```


Generating Our Deployment Script

Writing our deployment command line script



Bluebeam® Revu® 21 Deployment Guide

/i - Tells the windows install to call up the msixexec.exe to run an installation

/qb - Tells the windows install to run in an unattended mode that display a progress bar

/qn - Tells the windows install to run in an unattended and silent mode

```
msiexec.exe /i "\\MyServer\Bluebeam?Deployment\Bluebeam Revu x64 21.msi" /qb
```

```
msiexec.exe /i "\\MyServer\Bluebeam?Deployment\BluebeamOCR x64 21.msi" /qn
```

BB_AUTO_UPDATE	Enable or Disable in-app update notifications: Enabled (default) = 1, Disabled = 0. See notes.
BB_DISABLEANALYTICS	Enable or disable sending application usage info to Bluebeam. Send (default) = 0, don't send = 1. See notes.
BB_DEFAULTVIEWER	Set as the default application (default) = 1, Do not change the default = 0. See notes.
BB_DESKSHORTCUT	Bluebeam Revu desktop shortcut (default) = 1, No shortcut = 0
BB_DESKSTAPLER	Bluebeam Stapler desktop shortcut = 1, No shortcut (default) = 0
BB_FEATURES	Disables various Revu features: All Features Enabled = 65535 (default). See Enabling and Disabling Revu Features with BB_FEATURES for more information.
BB_IE_PLUGIN	Install and enable = 1, Disable (default) = 0
BB_JOBOPTIONS	Enter the UNC or fully-qualified path to your custom. jobOptions file.
BB_NETCONFIG	Enter the UNC or fully-qualified path to your managed NetConfig folder.
BB_PAGESIZE	Enter "A4" to override default page size for the Bluebeam PDF printer.
DISABLE_WELCOME	Disables the Revu HTML Welcome page and Workflow Training Videos page. Enable (Default) = 0, Disable = 1 Creates a registry entry <i>Computer\HKEY_CURRENT_USER\Software\Bluebeam Software\21\Revu</i> and DWORD named <i>WorkflowsInitialized</i> .
BB_REVUPREFERENCES	Enter the UNC or fully-qualified path to your RevuPreferences.xml file.
IGNORE_RBT	Disable Check for Pending Reboot = 1, Check for Pending Reboot = 0. See notes.
MBCODE	Determines which of the Bluebeam plugins are enabled. The default value of 2047 enables all of them. See Enabling the Bluebeam Plugins with MBCODE for more information

Customizing Deployment Script

Revu Features and Their Numeric Values:

65535

Administrator Button (Revu Menu) = 128

Product Updates Button (Help menu) = 16

AllFeatures = 2047

Redaction Cut Content & Erase Content = 2

DigitalSignatures = 4

SelfSignCertificates = 8

EditText = 1

TranslateMarkups = 32

ExportToOffice = 64

Session Following Feature = 512

BuyNow = 1024

Customizing Deployment Script

Revu plugins and their numeric values

AutoCAD = 2

Navisworks = 512

AutoCAD LT
(32 & 64-bit) = 4

ProjectWise = 64

Internet Explorer = 32

Revit = 16

Microsoft Office = 1

SolidWorks = 8

Customizing our Deployment Script

Example:

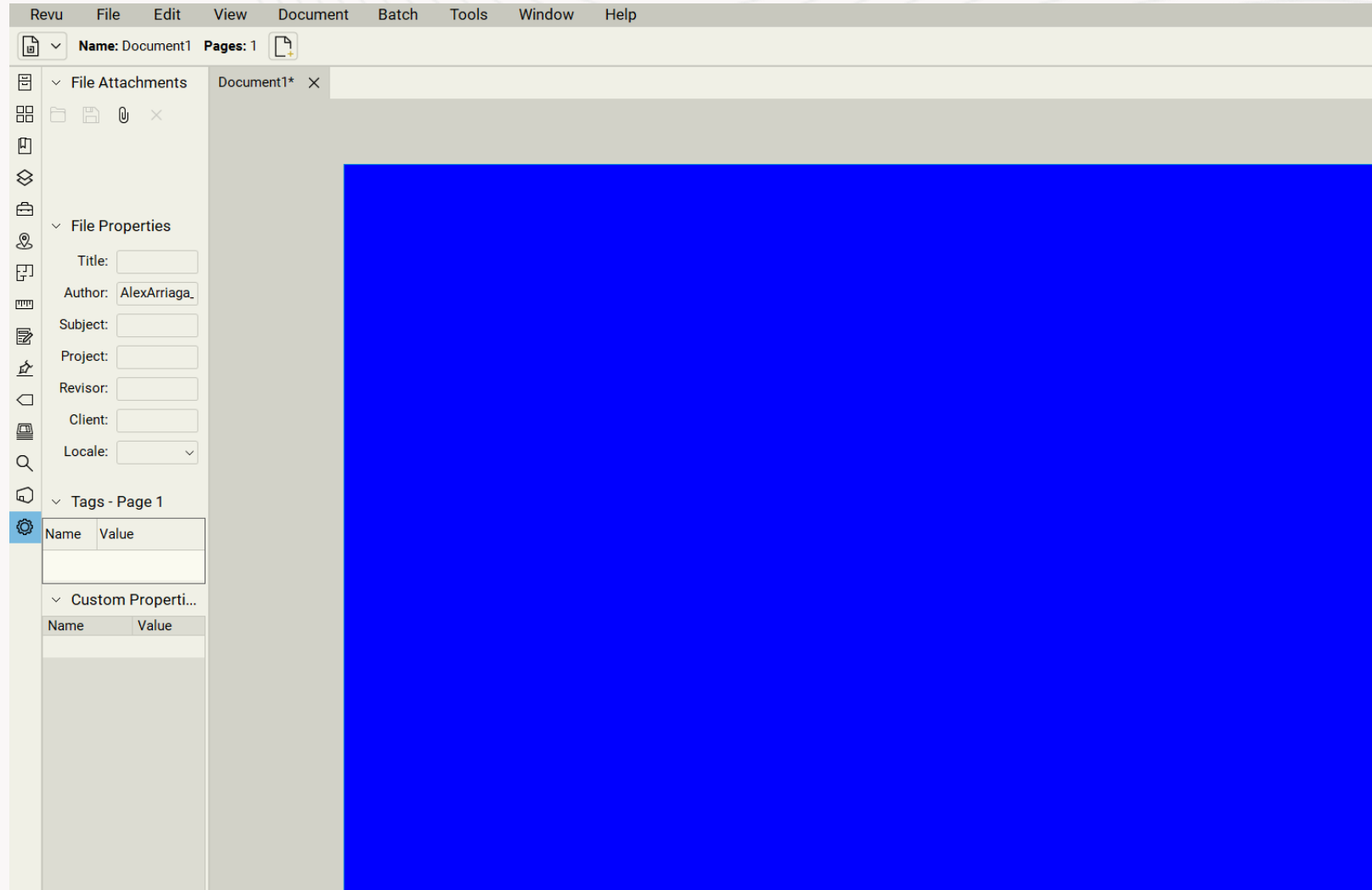
```
msiexec.exe /i "\\YOURSERVERLOCATION\Bluebeam Revu x64 21.msi" DISABLE_WELCOME=1  
BB_REVUPREFERENCES="\\YOURSERVERLOCATION\Revu21Preferences.xml" /qn
```

Live Demo:

```
msiexec.exe /i "C:\Users\AlexArriaga_v6zpa0k\OneDrive - Symetri\Documents\BlueBeam\Unbound  
2025\Deployment\Bluebeam Revu x64 21.msi" DISABLE_WELCOME=1  
BB_REVUPREFERENCES= C:\Users\AlexArriaga_v6zpa0k\OneDrive -  
Symetri\Documents\BlueBeam\Unbound2025\Deployment\Unbound2025Preferences_Light_ThankYou_Blue.xml"  
/qb
```

Finished Deployment

- Installed
- Preferences Applied



Final Script Example

```
msiexec.exe /i " "\\MYSERVERLOCATION\Bluebeam Revu x64 21.msi" BB_AUTO_UPDATE=0  
BB_DEFAULTVIEWER=1 DISABLE_WELCOME=1 BB_REVUPREFERENCES="  
" "\\MYSERVERLOCATION\Revu21Preferences_Light_ThankYou_Blue.xml" /qn
```

pause

```
msiexec.exe /i "\\MYSERVERLOCATION\Deployment\2021\BluebeamOCR x64 21.msi" /qn
```

pause

```
"C:\Program Files\Bluebeam Software\Bluebeam Revu\RevuVersion#\Revu\Revu.exe" /s  
/bpximport:"U:\netProfiles\Power.bpx"  
/bpxactive:Power/btximport:"U:\netProfiles\Revu\toolset1.btx"  
/btximport:"U:\netProfiles\Revu\dimensions.btx"
```

Questions?



UNBOUND 

Thank you!

Alex Arriaga
Design Technology Specialist – Bluebeam
Symetri US