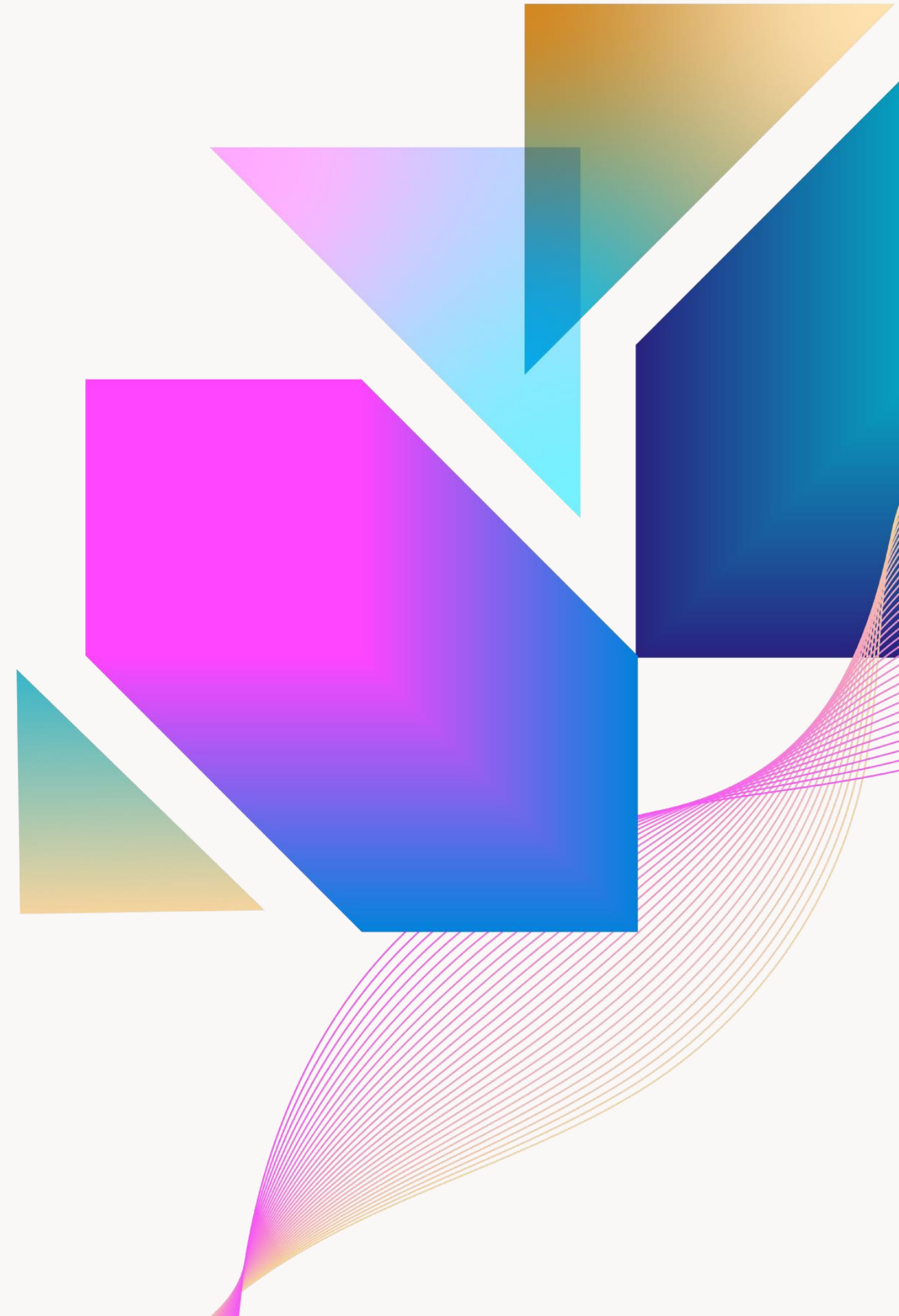




# Space Planning with Bluebeam Revu

**Erik Schonsett**  
Manager, Workflow Consulting  
Bluebeam, Inc.



# Agenda

- 01 Overview**
- 02 Tools for Space Planning**
- 04 Creating a Space Plan**
- 05 Linking Plan to Program (Quantity Link)**
- 06 Furniture Layout**
- 07 Questions**

# Space Planning

## Old Process was Time Consuming

- Draw each program space based on program requirements in CAD
- Print all program elements at scale
- Cut out the program spaces
- Arrange program on floor plan
- Hope the wind doesn't blow before you photograph your layout



# Space Planning in Revu

# Space Planning: Best Practices

- Create typical program elements and Furniture. Save them to a Tool Set to easily reuse them.
- Turn on snap to markup and snap to content to make laying out the program elements in Revu easier
- Split screens between Revu and excel to keep track of your layout versus the provided program
- Place a legend on the drawing so others can easily see what colors represent what program elements in the plan.

# Download: Quick Guide

- Process
- Tips
- Best Practices
- Profile
- Excel File
- Drawings

**Erik Schonsett**  
Manager  
Workflow Consulting  
Bluebeam, Inc.

**eschonsett@Bluebeam.com**

