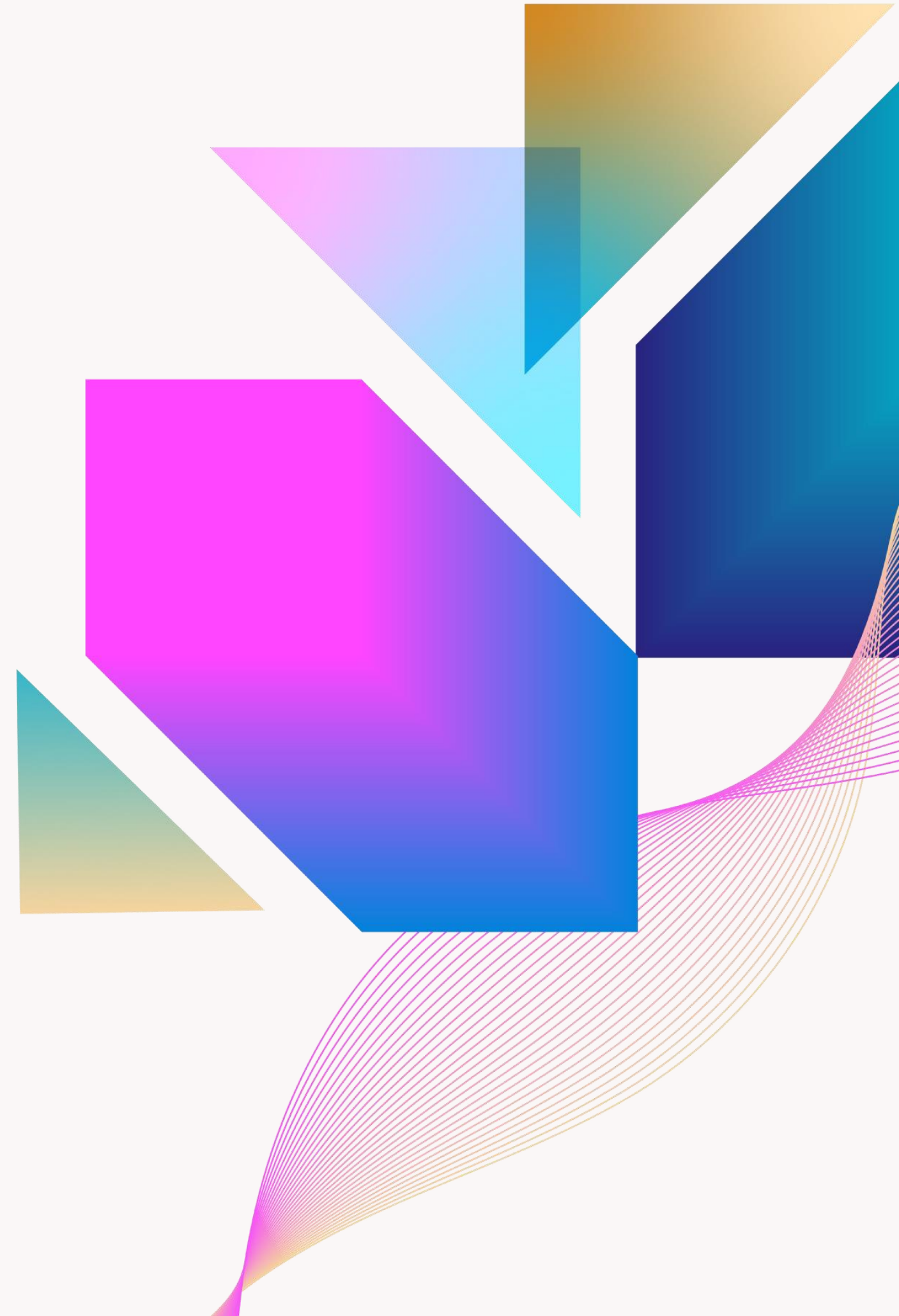




Efficient Markups for Engineers

Bluebeam Best Practices

Presenter: Lucas Willhoite – Workflow Consultant



What You'll Learn Today

- Customize annotations for engineers and save them in the Tool Chest.
- Using measurement tools and dynamic tool sets
- Collaboration using Studio for design reviews
- Using the markups list
- Best practices for Engineers

Meet your Consultant

- **Bachelor of Science in Construction Engineering**
 - Attended Oklahoma State University
- **4 years of AECO experience**
 - Worked for General Contractors in Texas and Colorado
- **3 years of working for Bluebeam**
 - First used Bluebeam 8 years ago in the AECO industry
- **Comprehensive industry knowledge**
 - From both, as a user and the implementation perspectives
- **Well-rounded Workflow Consultant**
 - Has worked with customers from nearly all aspects of the AECO industry



Lucas Willhoite

COURSE DESCRIPTION

Why use Bluebeam?

The construction landscape is fast-paced and ever evolving with the introduction of new technologies, software, and construction methods.

In this course we will discuss how to efficiently:

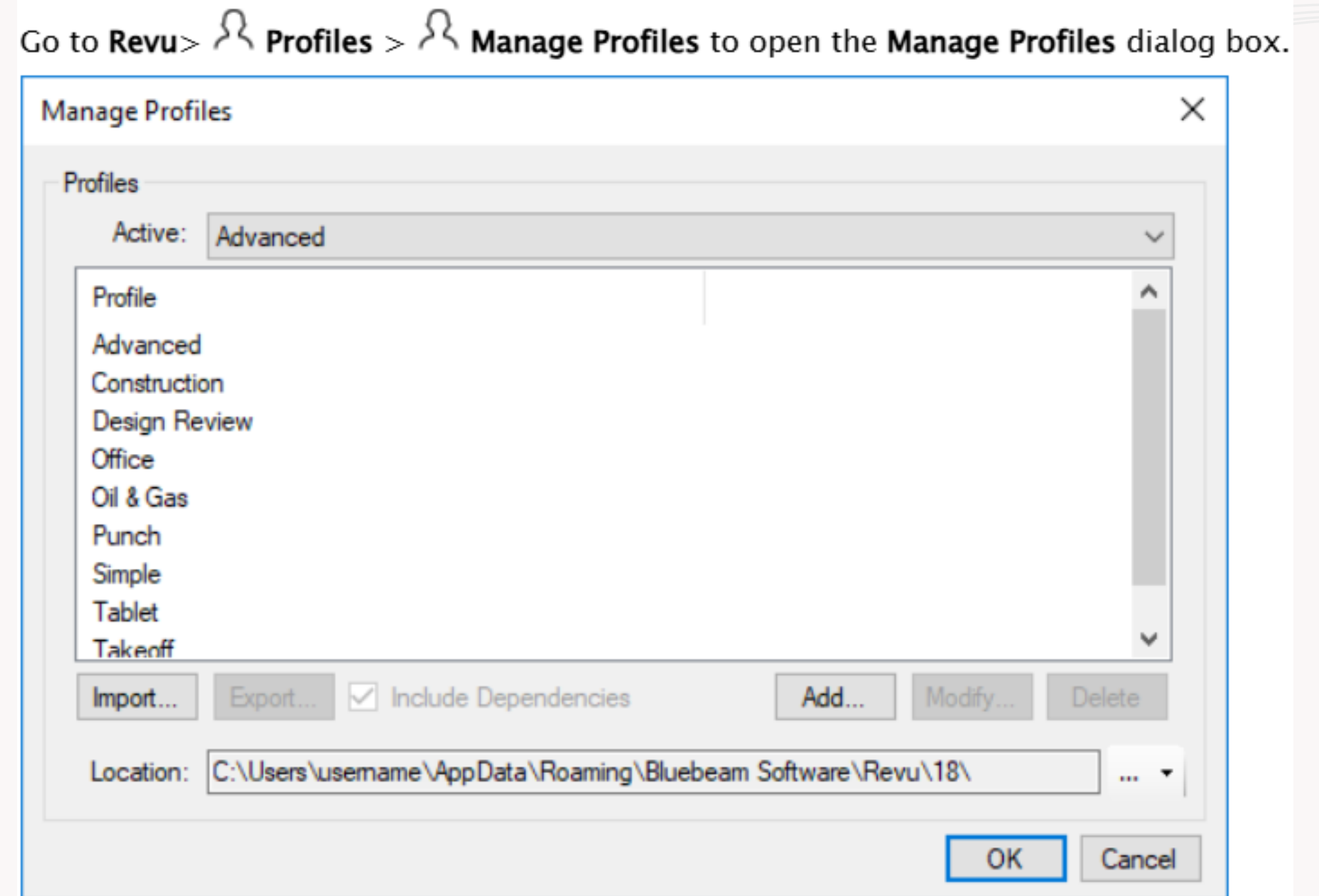
- **Markup construction plans**
- **Communicate design changes**
- **Perform thorough design reviews within a digital environment.**

This process involves using both Bluebeam **Profiles and Toolsets**, the **Markups List**, and **Studio Projects/Sessions**.

Bluebeam Profiles

Why are Profiles important?

Profiles provide an easy way to store your favorite toolbars, menus and other display settings so that the tools you find most useful are readily available each time you open Bluebeam Revu.



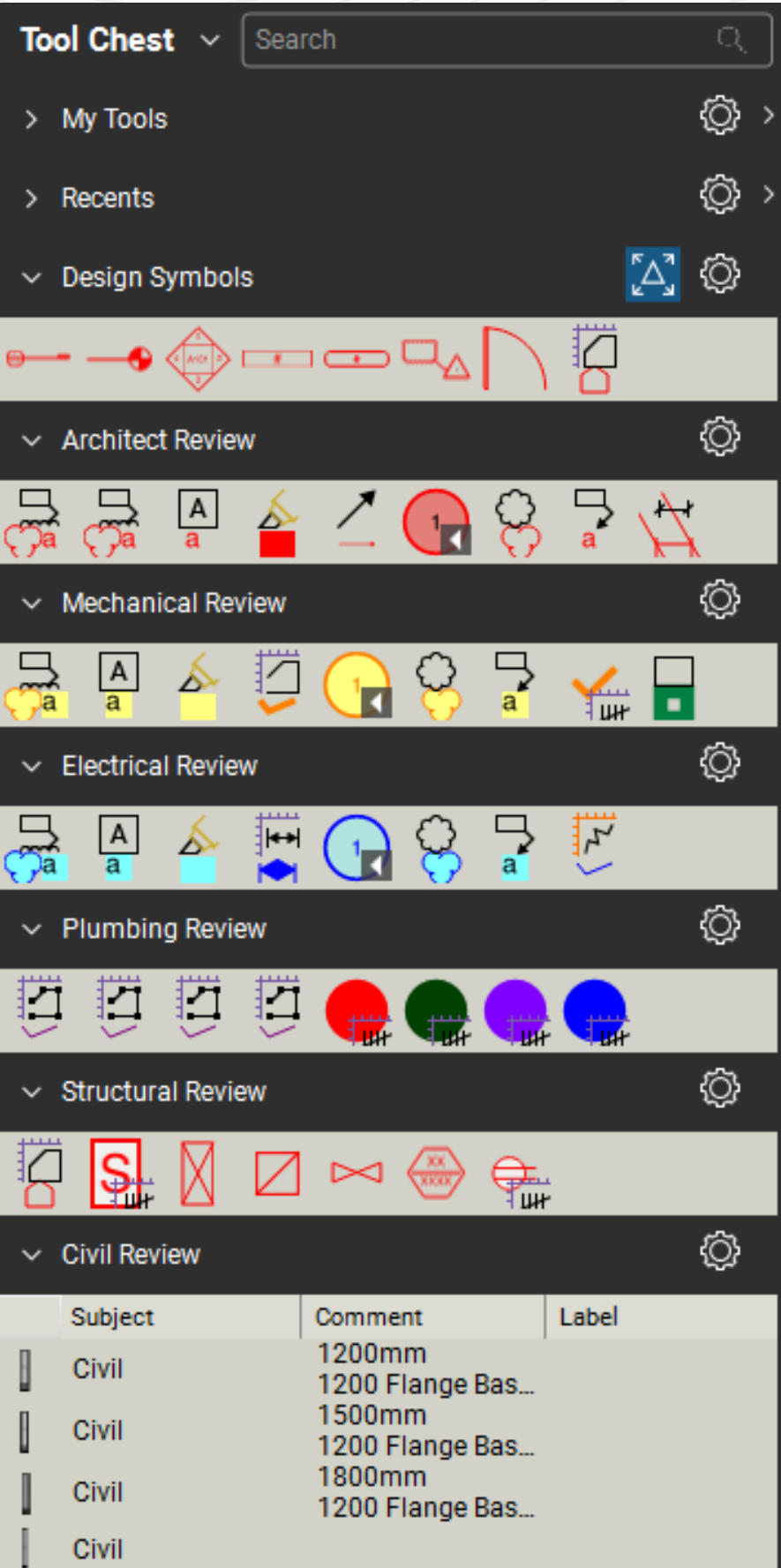
Bluebeam Toolsets

Why are Toolsets important?

Tool sets can be created and shared among different users of Revu.

Sharing tool sets is useful for setting standard markups for different projects, job functions, clients, and more.

Effective management of tool sets is an important part of getting the most out of Revu.






Markups List

What is the Markups List?

The Markups List automatically tracks markups placed on a PDF, including author, date, color, and comments associated with each markup.

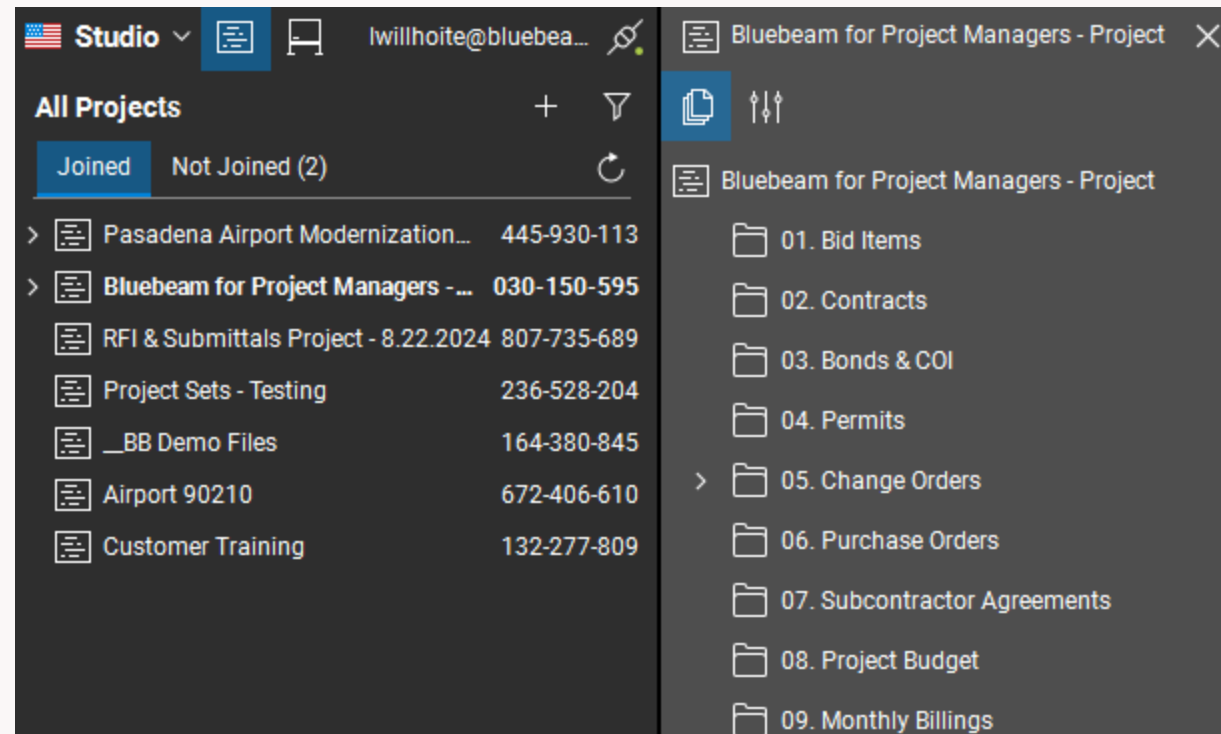
The Markups List is a crucial piece of performing a design review.

Markups List  <input type="text" value="Search"/>							
Page Label		Subject	Measurement	Comments	Author	Date	Status
Plumbing (2)			6 Count				
 P1.1.1 - 1ST FLOOR PLAN PLUMBI...		Plumbing	1 Count	Add additional sink	lwillhoite	9/8/2025 1:04:54 PM	Accepted set by lwillhoite...
 P1.1.1 - 1ST FLOOR PLAN PLUMBI...		Plumbing	5 Count	5	lwillhoite	9/8/2025 1:06:02 PM	Fixtures, Doors, Windows

Bluebeam Studio

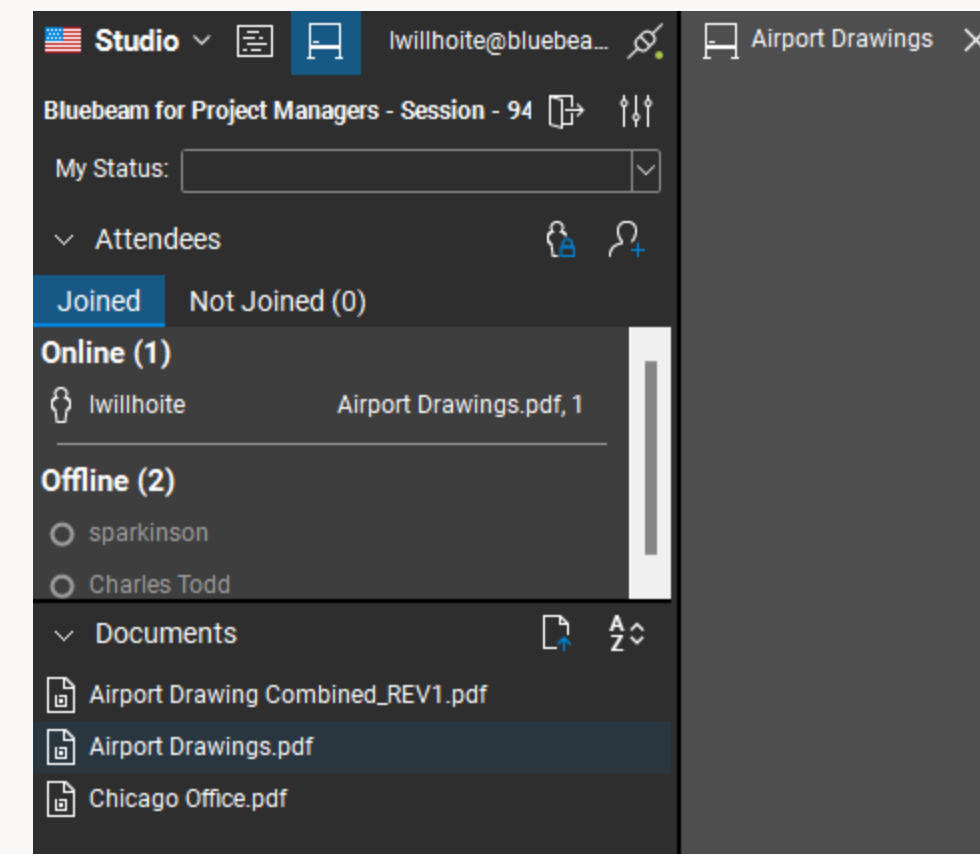
Studio Projects

- Studio Projects behaves similar to a shared drive
- Folder structure
- Only one individual can edit a document at a time
- Can share documents via share link
- Can create Studio Session within a Studio Project



Studio Sessions

- Studio Sessions is Bluebeam's staple for collaboration
- Many different users marking up a PDF at the same time
- No folder structure
- Typically used for quick applications
- Can push PDFs back to a Studio Project



Live Demo



Questions

Need additional assistance? Come meet with the Bluebeam Consultants and chat with us!

Additional Resources:

Bluebeam University

[University.Bluebeam.com](https://university.bluebeam.com)

Bluebeam Training

[Bluebeam.com/resources/training](https://bluebeam.com/resources/training)

Bluebeam Consulting

[Bluebeam.com/resources/training/consulting](https://bluebeam.com/resources/training/consulting)