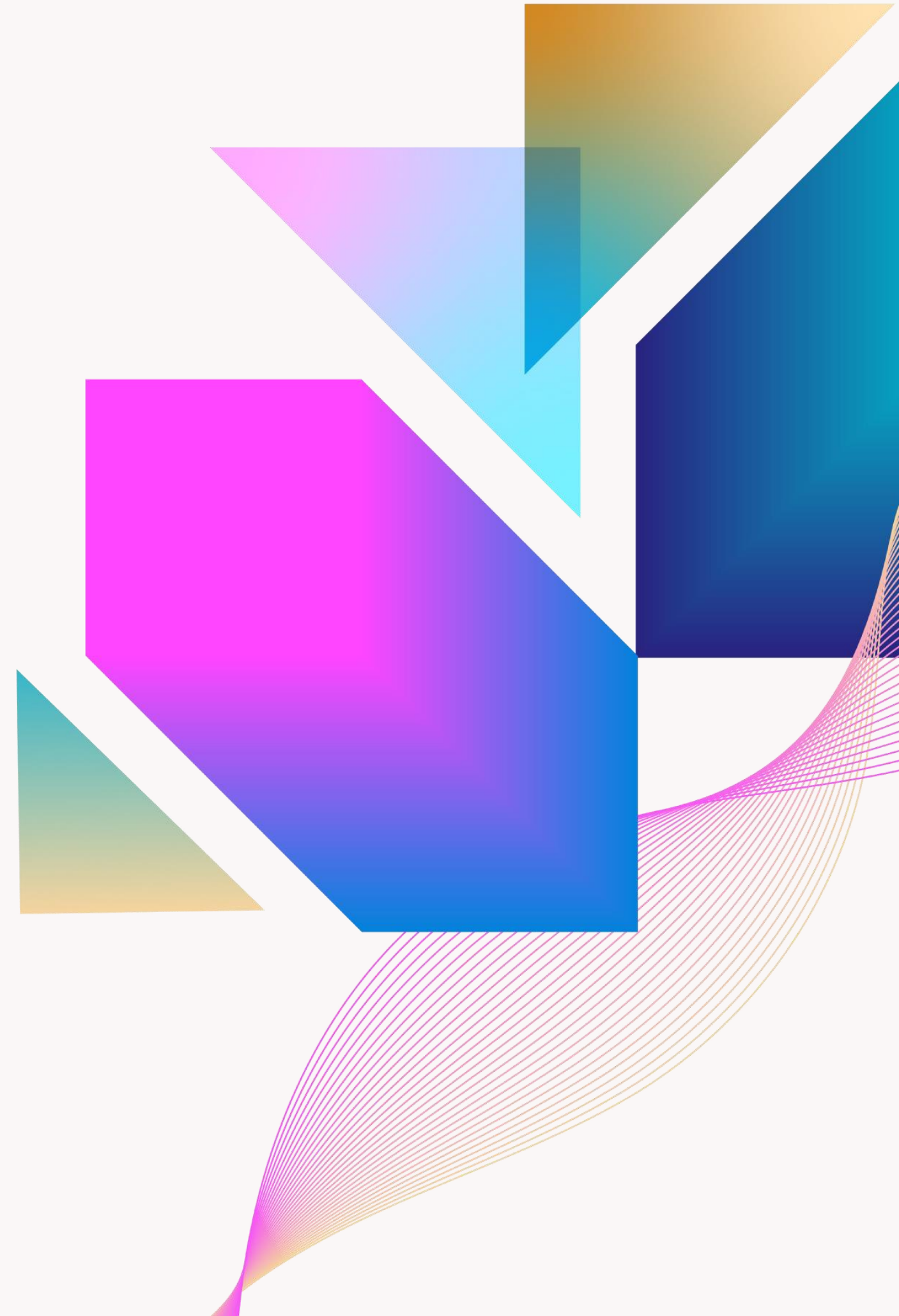




# Bluebeam Tips & Tricks

For Maximizing Efficiency at Max Speed

Troy DeGroot  
Director of Bluebeam Professional Services  
UChapter2



# Troy DeGroot

## Director of Bluebeam Professional Services

- 4 Years Structural Steel Detailing
- 12 Years Structural Designer
- 2 Years BIM Manager
- 6 Years Technical Instructor (AutoCAD, Revit, Bluebeam)
- Bluebeam Certified Instructor Since 2015
- 5 Years Owner of UChapter2
- 9x Speaker at Bluebeam's XCON
- 2x Speaker at Unbound
- SME Writer for Bluebeam



# Agenda (Best Guess):

- Interface Optimization
- Efficient Navigation
- Advanced Markups
- Measurement & Estimating Enhancements
- Document Management Best Practices
- Collaboration & Workflow Integration

## Agenda (Best Guess):

- Interface Optimization
- Efficient Navigation
- Advanced Markups
- Measurement & Estimating Enhancements
- Document Management Best Practices
- Collaboration & Workflow Integration

## Rules:

- Save questions for the end
- TAKE LOTS OF NOTES, VERY QUICKLY
- Email me YOUR favorite tips, I'll share next year.  
[Troy.DeGroot@UChapter2.com](mailto:Troy.DeGroot@UChapter2.com)



# Thank You!



FREE Resources

Troy DeGroot



Director of Bluebeam Professional Services

[Troy.DeGroot@UChapter2.com](mailto:Troy.DeGroot@UChapter2.com)