



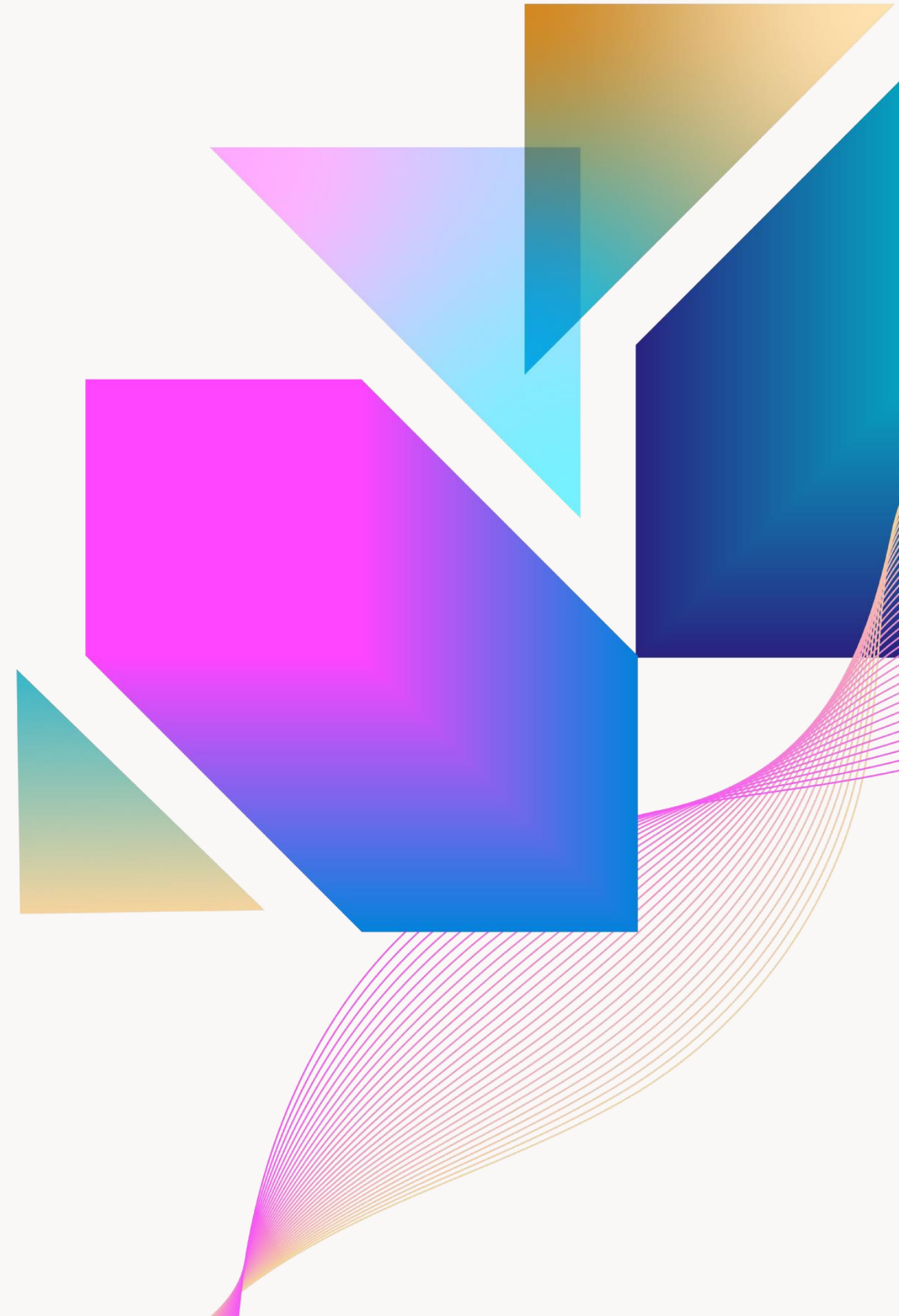
Integrations: New Public API endpoints & the Bluebeam Developer Network; Bluebeam Web DMS Integrations: OneDrive & Procore

Alan Arendt

Product Manager, Bluebeam

David Vallejo

Director Product Management,
Bluebeam



Agenda

01 Public API Integrations @ Bluebeam

- Public API
- Bluebeam Developer Network

02 DMS Integrations on Web

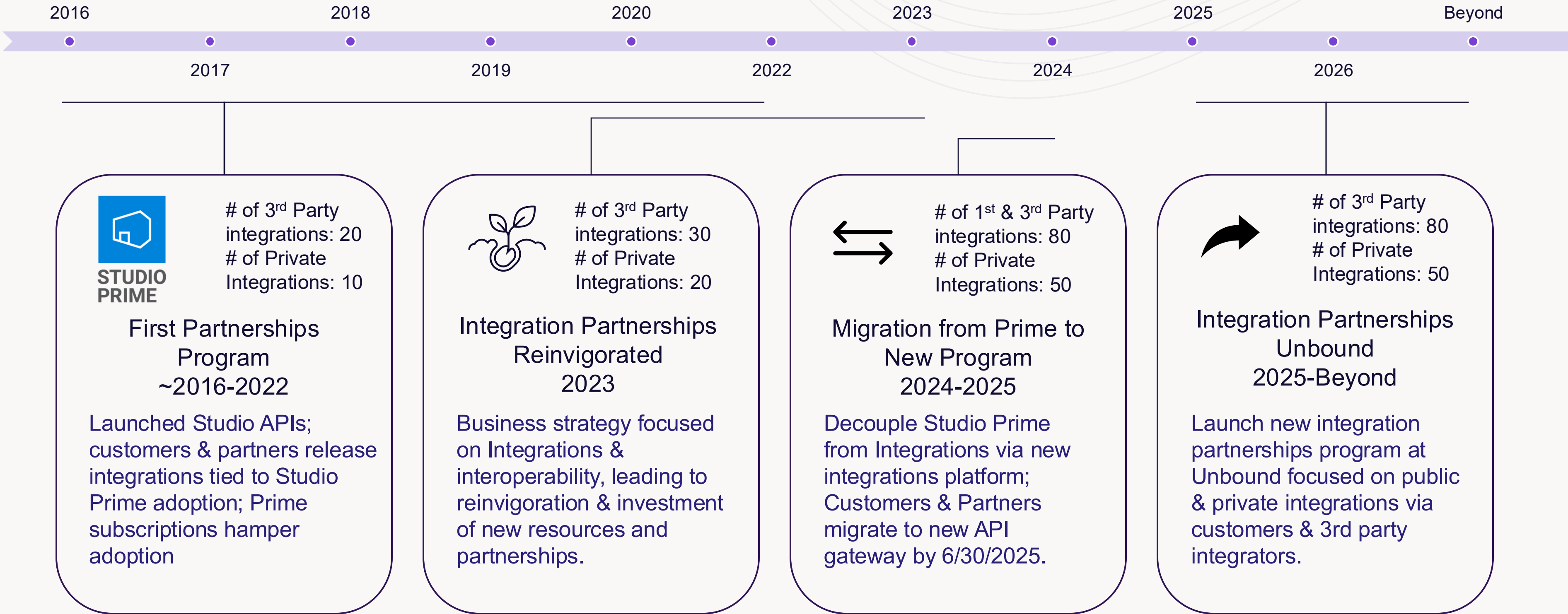
- SharePoint/OneDrive
- Procore Documents
- Sessions Import
- Future Enhancements

03 Open Discussion & Q&A

Public API & Bluebeam Developer Network

Integrations

Public API Integrations @ Bluebeam



Integrations Growth in 2025



Integrations Directory

A new place for anyone to quickly see which integrations are available through Bluebeam.
integrations.bluebeam.com



Global Public API Expansion

Availability of our Public API in all supported Bluebeam regions.



Migrations

Completed integrations migrations to our new API Gateway.

Ongoing

New Integrations

New technology partners continue to build connected experiences with our Public API! Our integrations directory has the latest on Plugins, DMS, and Public API based integrations.



Markups API v1

Users can now pull in markup data in the markup list via the Public API and sync markup statuses bi-directionally.



New Developer Experience

We made it easier for developers to find documentation and get started in building an integration with Bluebeam.



Integrations Support Hub


A testing environment for partners to test their applications before being submitted to production.
[Integrations Support Hub](#)

Today!

BBDN

Re-introducing the Bluebeam Developer Network to support our developers and integration partners.

Bluebeam Developer Network

BLUEBEAM
DEVELOPER
NETWORK

Resources ▾

Join BBDN

Login

OVERVIEW

Get started

Concepts

Tutorials

Changelog

DOCUMENTATION

▾ Authentication

▾ Studio Sessions

▾ Studio Projects


▾ Jobs

▾ Subscriptions

▾ Miscellaneous

▾ Beta

Get started in the Bluebeam Developer Portal



The Bluebeam Developer Portal, for integrations development, is only available to active customers, channel partners, and software partners in the US, AU, and DE regions.

This page is your guide through our new Developer Portal. We recommend that you open it in its own tab as you go through the steps in a separate tab.

Choose your path:

- New to Bluebeam's API? Head down to [Platform overview](#).
- Migrating an existing integration to our new platform? See our [Migration Guide](#).
- Want to quickly make a call? See [Get an access token](#).

>

Platform overview

> Get an access token

> Migration Guide

See also:

- [Authentication Guide](#)
- [Studio Session Guide](#)

DMS Integrations on Web

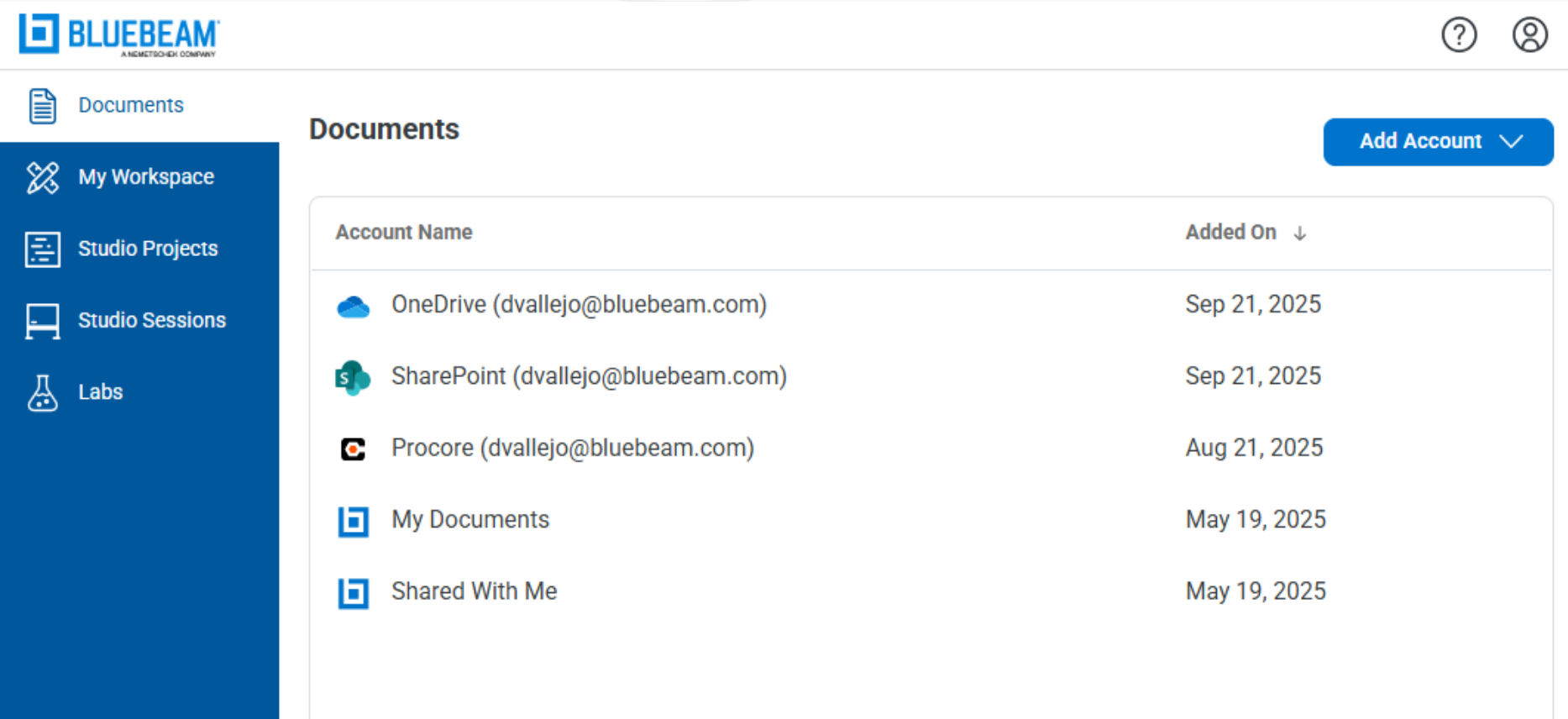
Where We Are Today

SharePoint and OneDrive

Demo


What's included

- Directly mark-up SharePoint and One Drive files
- Changes Save Automatically
- No Data Duplication!



Procore Documents

Demo

 BLUEBEAM
A HCSS/STICHEDI COMPANY

Documents

My Workspace

Studio Projects

Studio Sessions

Labs

Documents / Account (dvallejo@bluebeam.com) / Bluebeam / Airport Project

Name ↑	Size
Drawing Archive	--
Drawings	--
Progress Reports	--
Test Files	--
A6.08_-_STAIRS.pdf	861.41 KB
Set_18_53_19.pdf	18171.74 KB
Set_18_53_22.pdf	18209.29 KB

Sessions Import

Demo

Providers

- SharePoint/OneDrive
- Box
- Dropbox
- Egnyte

Import Files

Name ↑

OneDrive (dvallejo@bluebeam.com)

Procore (dvallejo@bluebeam.com)

SharePoint (dvallejo@bluebeam.com)

Cancel

Import

Open Discussion & Q&A

How can we help you?

Thanks for Joining

Alan Arendt

Product Manager, Bluebeam

David Vallejo

Director Product Management,
Bluebeam