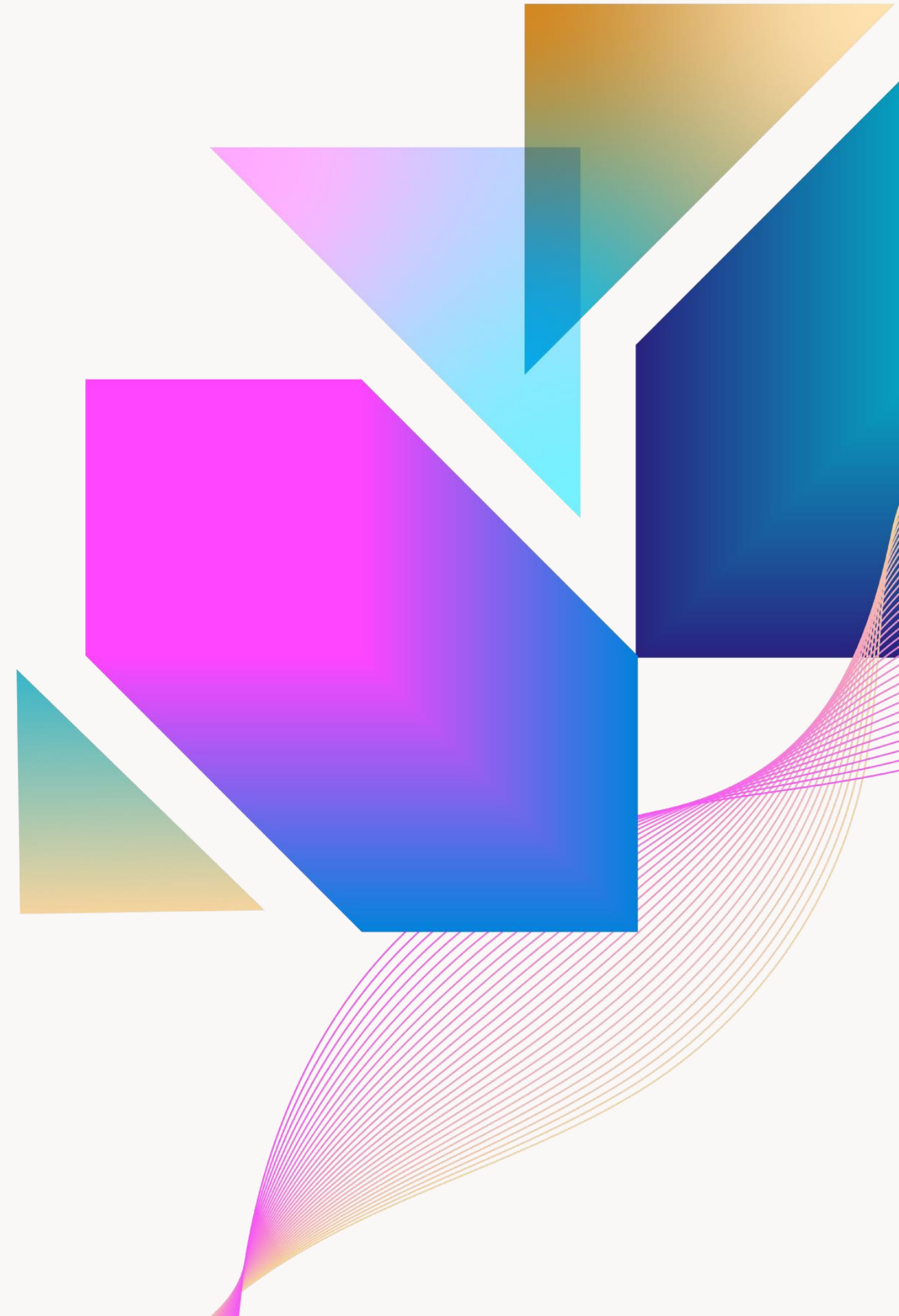




Document Intelligence with AI

Mark Macbeth
Akarsha Surendar



What is Document Intelligence?

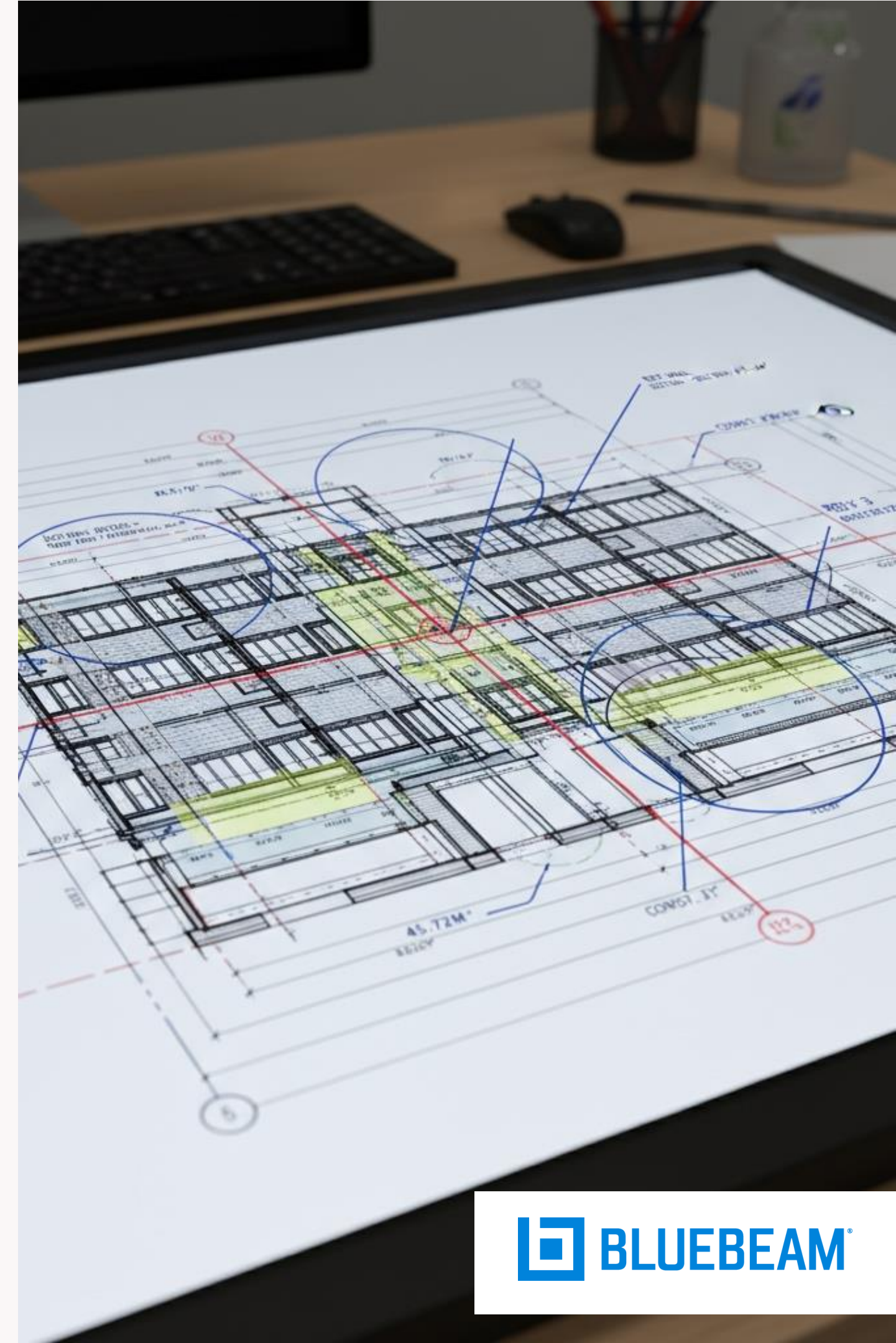
Level 1: Content in a document

Level 2: Markup Content

Level 3: Markup Metadata

Level 4: Coming together – workflows!

Data rich files and workflows start with "Intelligent Search"



Existing Revu 21.6 Search Features

- Search filenames in current folder
- Search panel w/. support for Recents, folder, and Current Studio Project (local files)
 - Text
 - Visual Search
- OCR document and Search

Revu 21.7: Intelligent Search

- Intelligent Search finds content across the entire Studio project within
 - Document content
 - Document metadata
 - Images within PDFs
 - Markups
 - Markup metadata
- Find what you're looking for with keywords + filters or natural language queries

Keyword Search

Enter keywords to find to find content

- Keyword search syntax is just like Google search and advanced search:
 - + prefix for required text
 - - prefix for excluded text
 - " " double quotes around phrases and text with spaces
 - * wildcard to match any text
 - ? wildcard to match any single character

Keyword Search

Examples

- Find files containing plumbing or electrical
 - **plumbing electrical**
- Find files containing plumbing and electric or mechanical
 - **+plumbing electrical mechanical**
- Find incorrectly-sized cubicles within drawings
 - **"13' -11 1/4"**
- Find all Architecture files in 1xx series of drawings - * is too broad in this case
 - **"A 1*.pdf"**
- Try a more specific version of query above, then filter by filename matches
 - **"A 1?? .pdf"**

Natural Language Search

Search with human language across file and markup metadata

File / folder properties:

- Name
- Size
- Path
- Revision Number
- Document text
- Index status
- Created and updated time
- Page count

Markup properties:

- Type (ex: Text Box, Highlight, Pen, Cloud+, Callout, and all other Revu markup types)
- Subject
- Comment
- Checkmark
- Author
- Created and updated time
- Label
- Status, author, and updated time
- Layer
- Page number

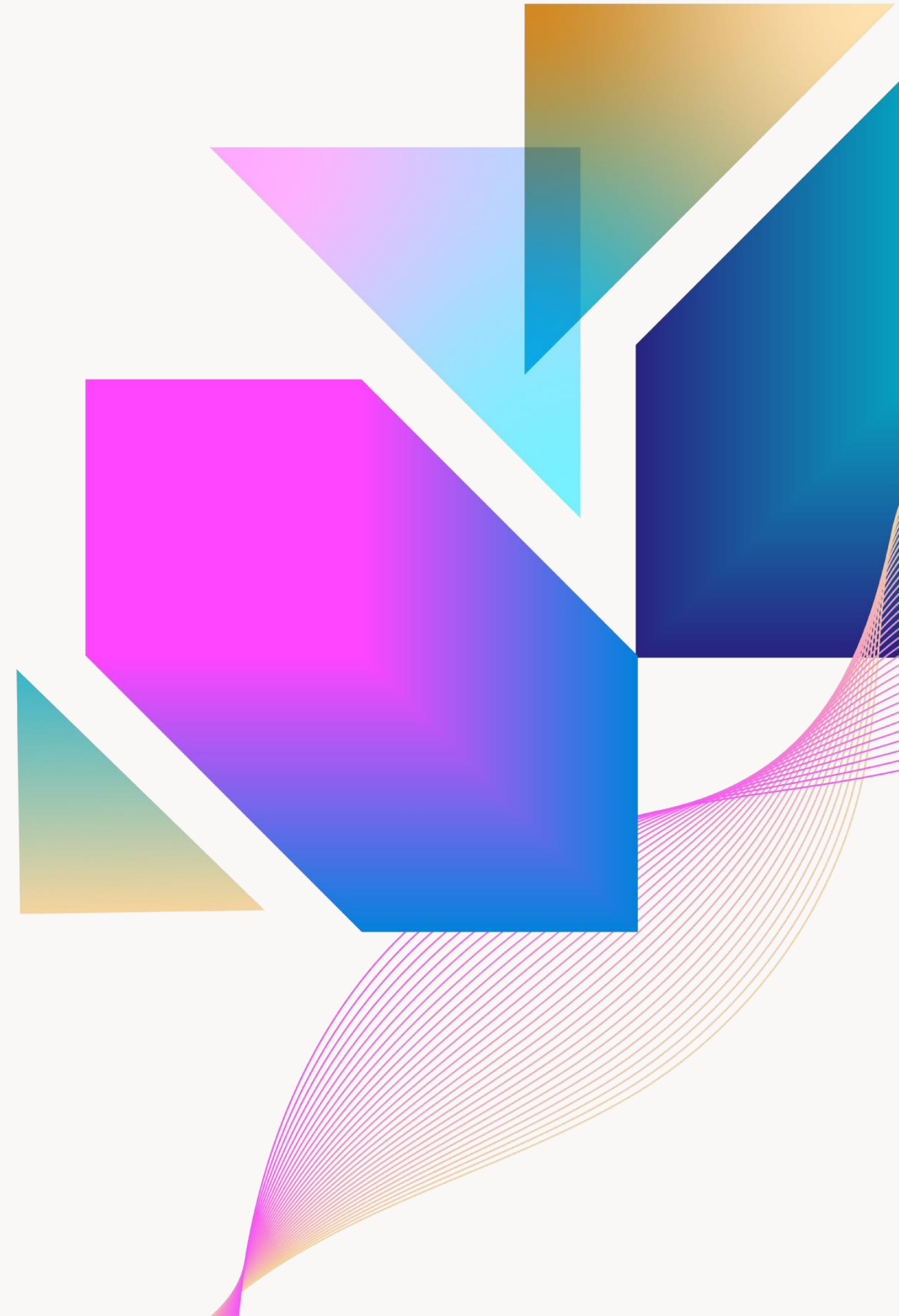
Natural Language Search

Examples

- All PDFs modified in the last week
- Markups created by mmacbeth that have not been accepted yet
- Markups about doors
- Get all password-protected files

UNBOUND 

Q&A



Mmacbeth@bluebeam.com

Asurendar@bluebeam.com